

3D BEND 20

LED STRIP

Direct | Surface



3D BEND 20 LED Strip combines full-directional flexibility with advanced performance, making it an ideal solution for dynamic, curved, and artistic lighting in both indoor and outdoor environments. Constructed with a built-in metal frame and a circular silicone extrusion, it allows 360° dot-free illumination and effortless shaping into creative forms and patterns.

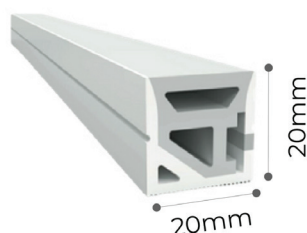
Featuring a high color rendering index (CRI ≥ 90) and a tight binning tolerance (SDCM <3), this strip delivers excellent color accuracy and smooth, uniform brightness throughout its entire run. It maintains at least 70% of its luminous output after 50,000 hours of use, ensuring long-lasting, consistent performance.

Available in CCT options of 2700K, 3000K, and 4000K, as well as RGB and RGBW, and providing a 180° beam angle, the strip supports Non-Dimmable, DALI-Dimmable, and RGB DMX512 control systems. Its IP67 rating offers superior protection against dust and moisture, making it suitable for exposed, humid, or outdoor installations.

Offered in 12W variants on a 10mm dual-sided PCB within a 20mm \times 20mm circular surface-mount profile, the 3D BEND 20 LED Strip delivers versatile, high-performance lighting tailored for artistic expression and architectural creativity.

Single Line Diagram

Surface



3D BEND 20 LED STRIP



Quick Info

Mounting Type

Surface

Material Colour

Customize RAL available

Protection mode

IP67

Driver Details

Non-Dimmable/ Dali-Dimmable/ RGB DMX512

Power Factor (PF) -0.95

THD- $<10\%$

UGR - <19

LED

CCT- 2700K/ 3000K/ 4000K/ RGB/ RGBW

CRI- ≥ 90

Life Span - L70@50000h

MacAdam - ≤ 3 SDCM

Beam Angle

180°

Optics

Silicon Diffuser

Efficacy

2700K- XXXXX

3000K- XXXXX

4000K- XXXXX

RGBW- XXXXX

RGB- XXXXX

Electrical

Wattage - 12W/Mtr

Input Voltage- 24V DC

Physical Dimensions

Width- 20mm

Height- 20mm